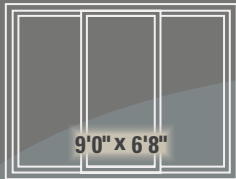
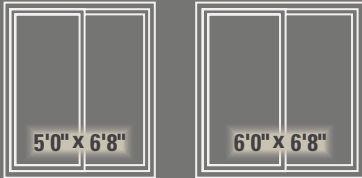




THE **ULTRAWELD** COLLECTION
VINYL PATIO DOORS

**ENERGY EFFICIENCY • EASE OF OPERATION + OWNERSHIP
LIMITED LIFETIME WARRANTY**

STANDARD SIZES



OPEN & SHUT

How would you like your door to open as viewed from outside?

Two panel - left or right panel glides

Three panel - center panel glides left or right



INTERNAL MINI BLINDS*
dust free, kid and pet safe

FEATURES

Foot operated dead bolt provides an extra lock point for secure partial opening.

Fusion-welding at door panel corners transforms four vinyl extrusions into a strong, one-piece door.

Sloped, aluminum-reinforced sill guides rainwater outside and away.

Safety Glass

Mortised hook lock with Double or Triple hook option.

Smooth gliding, solid-steel, zinc-plated tandem rollers. Iridium coating on exposed parts enhances corrosion resistance.



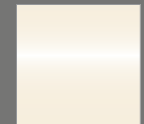
tan



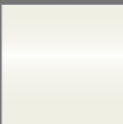
silver



gold



alabaster



white

CUSTOM SIZES

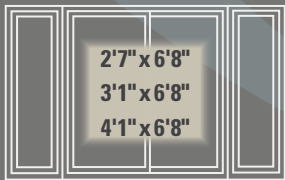
two panel widths - 36" to 94 7/8"

three panel widths - 95" to 142 7/8"

max height - 84"

SIDE LITES

standard sizes



custom sizes

width 1'6" to 4'1" max height - 84"



THRESHOLD

Design creates more efficient water drainage.



PERFECT PATIO DOOR

Our R&D department is vigilant in testing and updating designs and components. The vinyl formulation retains its smooth surface and color. Vinyl does not transfer cold from outside to inside. Your pristine Polaris® patio door will be energy efficient and maintenance free for a lifetime.

TRIPLE PANE PATIO DOOR

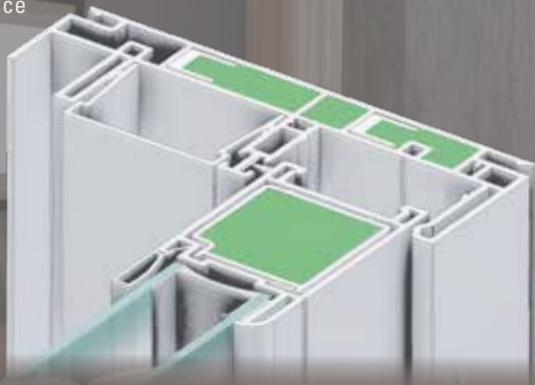
The following sizes are available in triple pane: 5', 6', and 9'. No custom sizes offered.

FEATURES + BENEFITS

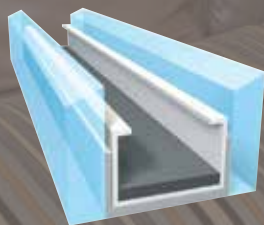
Vertical door panel extrusions are reinforced with aluminum. Door panels meet with Over and Under Interlock and feature double weather-stripping.

FOAM FILLED*

Foam filled vertical main frame adds strength and insulating performance



STAINLESS INTERCEPT SPACER*



MORTISED HOOK LOCKS



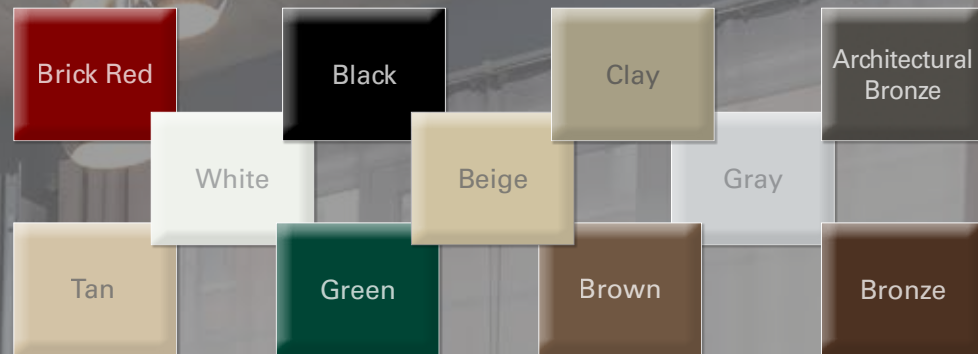
2 Point*



standard

EXTERIOR PAINT* 20 YEAR WARRANTY against fading, peeling or blistering

Unique, high-performance exterior coating specially formulated for PVC. Crack & impact resistant • Touch-up paint included • Lead time 4-6 weeks. AAMA testing ensures that coating resists strong solvents, heat gain and thermal shock. ‡ Muntin color may be affected by glass coatings, such as Low-E.



ENERGYSMART® GLASS

Standard EnergySMART® SUPREME² glass features the Intercept® U-shaped steel spacer system and Argon gas fill between panes. Temperature transfer and condensation are reduced. EnergySMART upgrades offer stronger resistance to temperature transfer. Ask about ENERGY STAR qualified doors.

MULTI-POINT LOCK SECURITY*

Steel hooks lock at three points.



3-Point Multi-Point*



*options

ULTRAWELD®

DECORATIVE GLASS*

designs



colonial



prairie style



double prairie style



diamond n/a contour or brasses

internal muntin styles



smooth



contour



antique brass



satin nickel



slim line brass



view



floral view



elongated floral view



arch view

view glass 3/8" v-groove, interior surface of glass unit pane

MORE GLASS OPTIONS

Bronze or Gray tint

Krypton fill further resists temperature transfer

Glass Breakage Warranty

HANDLE SETS exterior key lock



satin nickel*



polished brass*



antique brass*



aged bronze*



white, tan or brown
coppertone for woodgrains



WINDOW & MUNTIN COLORS*

vinyl



white standard



tan



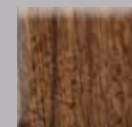
brown



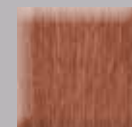
medium oak



dark oak



cherry



vintage pecan



coppertone

n/a brown vinyl

Hardware Woodgrains



Made in the USA



NAMI Certified

*options

LT103 3M 4/17

SCREENS

Proven and Reliable

Strong, extruded aluminum frame in white, tan or brown.

Glides on 1 1/4" steel rollers.

Half screen Standard

Also available in Pet Screen*

Aluminum Screen Mesh*

BetterVUE® Screen Mesh (A)

- Better Insect Screen
- 10% Better Insect Protection
- 20% Better Airflow
- 20% Clearer View

Standard Screen Mesh (B)

- Sight more obstructed
- Less Airflow than BetterVue Screens

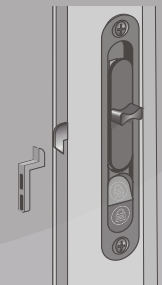
A



B



SCREEN HANDLE



1580
heaviest extrusion
with mortised lock
standard